

# EDAN

*Care for health*

## **Veterinary Ultrasound Diagnostic System**

**-- U50 VET**

Edan Instruments, Inc.  
International Marketing Dept.  
[www.edan.com.cn](http://www.edan.com.cn)

Sep.,30,2013

# General Information

## Veterinary Ultrasound Diagnostic System

### U50 VET

Superior Value and Versatility



# Standard Configurations

<b>Standard Configuration including:</b>
Main Unit
12.1 inch LCD monitor
Two standard transducer connectors
Pulsed Wave Doppler
Color Doppler Imaging
Directional Power Doppler Imaging
Phased Inversion Harmonic Compound Imaging
Spatial Compounding Imaging
Speckle Reduction Imaging
Measurement and calculation software packages
Multi-language software packages
Multi-Pseudo color
Micro-convex array transducer C6152UB(5.5/6.5/7.5/H4.5/H4.7MHz,128 elements)

# Transducers

With more than ten years of experience in transducer design and manufacturing, Edan offers a comprehensive suite of high-performance transducers with outstanding quality and reliability.

Micro-convex array:  
C6152UB



Micro-Convex array:  
C612UB



Micro-Convex array:  
C422 UB



Linear array:  
L1042UB



Linear array:  
L742UB



Linear array:  
L552 UB



Convex array:  
C352UB



Endorectal:  
V742UB



Endorectal:  
V562UB



# Transducers

Transducer	Application
C6152UB	Abd-Small, Kidney, OB Canine, OB Feline, OB others, Cardiac
C612UB	Abd-Small, OB Canine, OB Feline, OB others, Cardiac
L742UB	Abd-Small, Kidney, OB Feline, Peri.Artery, Superficial, Tendon
L1042UB	Abd-Small, OB Feline, Peri.Artery, Superficial, Tendon
L552UB	Abd-Small, Abd-Medium, Peri.Artery, Small Parts, OB Others, Tendon
C352UB	Abd-Small, Abd-Large, OB Ovine, OB others
V562UB	OB Bovine, OB Equine, Muscle, Tendon,
V742UB	OB Bovine, OB Equine, Muscle, Tendon,

# Transducers

Probe type		Convex	High-Freq Linear	Linear	Endocavity	Endocavity	Micro-convex	Micro-convex	Micro-convex	Linear
Model name		C352UB	L1042UB	L742UB	V562UB	V562UB	C612UB	C6152UB	C422UB	L552UB
Central Freq(MHZ)		3.5	10	7.5	5	5	6.5	6.5	4	5
Bandwidth(MHZ)		2.0~6.0	5.2~12.0	5.0~10.0	3.0~7.0	3.0~7.0	4.7~9.5	4.3~9.3	2.6~5.5	3.7~7.6
B/M Freq (MHZ)	2D1	2.5	8	4	6.5	5.5	5.5	5.5	3	4.5
	2D2	3.5	9.5	5	7.5	6.5	6.5	6.5	4	5.5
	2D3	4.5	11	6	8.5	7.5	7.5	7.5	5	6.5
H Freq (MHZ)	TH1	H2.5	H6.5	H3.5	H4.5	H4.5	H4.5	H4.5	H2.5	H2.8
	TH2	H2.7	H6.7	H3.7	H4.7	H4.7	H4.7	H4.7	H2.7	H3.0
D Freq (MHZ)	D1	2.5	5.5	4	5.5	5	5	4	2.5	4
	D2	3	6.5	5	6.5	6	6	5	3	5
Element		128	128	128	128	128	128	128	128	128
Depth(mm)		20~320	30~100	20~120	20~160	20~160	20~120	20~120	20~240	20~160

# Peripheral port



Peripheral ports:

- |   |                          |   |                          |
|---|--------------------------|---|--------------------------|
| 1 | USB ports                | 5 | VGA output port (15 pin) |
| 2 | S-Video output port      | 6 | Video output port        |
| 3 | Footswitch port          | 7 | Remote port              |
| 4 | Network port (DICOM 3.0) |   |                          |

# Other Accessories

- Needle-guided brackets for transducers
- Integrated hard disk
- Video printer
- Laser printer
- Inkjet printer
- Footswitch
- Li-ion battery
- Mobile trolley
- Hand carried bag
- DICOM3.0
- UMS100 workstation software





# Features

Characterized by a compact lightweight design with user-centric workflow, the U50 VET delivers on the need for highly portable easy-to-use ultrasound.



- ✓ Truly compact size promotes mobility
- ✓ LCD screen enhances visual experience
- ✓ Built-in extended battery life for point-of-care applications
- ✓ Large capacity integrated hard disk for extended data storage

# Technology

The U50 VET incorporates advanced imaging technologies traditionally available only on premium-priced systems. Phase inversion harmonic imaging, multi-beam, speckle reduction and spatial compound technologies are all standard on the U50 VET , providing increased diagnostic confidence.

- ✓ Multi-Beam-Forming
- ✓ Phased Inversion Harmonic Compound Imaging
- ✓ Speckle Reduction Imaging
- ✓ Spatial Compounding Imaging

# Technology



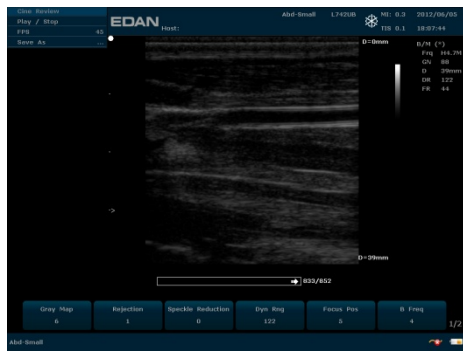
# Clinical Application

The U50 VET offers a wide range of advanced clinical applications to address all of your imaging needs. Practical clinical tools and calculations packages improve information access for increased diagnostic confidence.

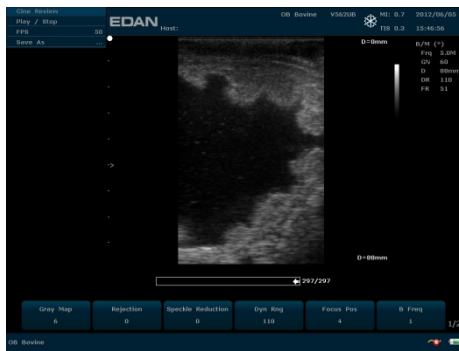
- ✓ Canine
- ✓ Feline
- ✓ Equine
- ✓ Bovine
- ✓ Ovine

# Clinical Application

## Clinic Images



Bovine Muscle



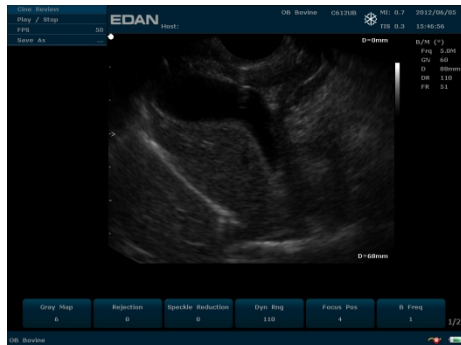
Bovine Uterus



Feline Kidney



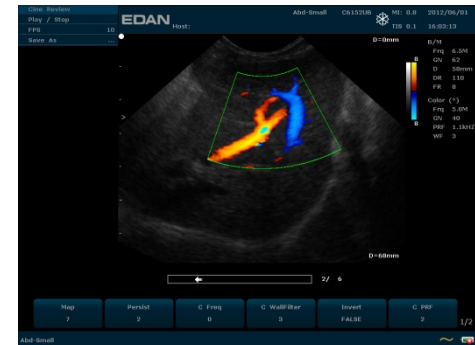
Canine Gall Bladder



Canine Artery



Canine kidney



Canine Liver

**Thank you**